



VPPS VALUES CUP SCORES			
ARUNDEL	ASCOT	ILFORD	TONKIN
268	292	280	299

NEWSLETTER

TERM 2 | WEEK 1 | FRIDAY 03/05/19

Hats

Students are required to wear an approved school hat (Legionnaire or Bucket, with school logo) which shades the face, ears and neck, during Terms 1, 3 and 4.

If broad brimmed hats are purchased from outside sources, the cord must be removed. Students without hats will have to sit under hard shade areas during recess and lunch. Students also must have a school hat in their tray in Term 2 to be used at the school's discretion in the event of unseasonable weather (UV Levels 3 and above between May and August).

Daily UV levels can be viewed via the Bureau of Meteorology website <http://www.bom.gov.au/uv/index.shtml>

NAPLAN

This term all the Year 3, 5 and 7 students will be participating in NAPLAN (National Assessment Program – Literacy and Numeracy). This will occur during weeks 3 and 4.

The dates are as follows

- Tuesday 14th May – Writing (Year 3 paper, Year 5 & 7 online)
- Wednesday 15th May – Reading (Year 5 & 7 online)
- Thursday 16th May – Reading (Year 3 online)
- Friday 17th May – Conventions of Language (Year 5 & 7 online)
- Monday 20th May – Conventions of Language (Year 3 online)
- Tuesday 21st May – Numeracy (Year 5 & 7 online)
- Wednesday 22nd May – Numeracy (Year 3 online)

Catch up tests will be undertaken throughout this time.

All students involved are becoming familiar with the format of the tests. The tests will provide teachers and parents with specific information about what students know and can do in some aspects of literacy and numeracy. This information is supplementary to ongoing assessments throughout the year.

DIARY DATES

Term Dates 2019

- Term 1** 29th Jan - 12 Apr
- Term 2** 29 Apr - 5 Jul
- Term 3** 22 Jul - 27 Sept
- Term 4** 14 Oct - 13 Dec

Governing Council

- Tuesday 14/05
- Tuesday 18/06

Principal Tours

- Wednesday 29/05

All welcome & bookings are required

Public Holidays

- Monday 10/06

Pupil Free Day

- Tuesday 11/06

Key Dates

Term 2

- 06/05 - SAPSASA Athletics
- 07/05 - Wipe Out Waste
- 09/05 - Mother's Day Stall
- 10/05 - Mother's Day Stall
- 14/05 - NAPLAN Commences
- 17/05 - Walk Safely to School Day
- 22/05 - DreamBig Year 4's
- 24/05 - P&C Morning Tea
- 29/05 - Active Travel Day
- 31/05 - Adelaide Crows Incursion
- 05/07 - Last Day of Term 2

2:05pm Finish

Term 3

- 22/07 - Term 3 Commences

growing for the future...



Principal

Jo Catsas-Maroulis
jo.catsasmaroulis493@schools.sa.edu.au

Deputy Principal

Ann Shepherdson
ann.shepherdson119@schools.sa.edu.au

Assistant Principal

Kim Dickmann
kimberley.dickmann611@schools.sa.edu.au



Government of South Australia
Department for Education





NEWS & UPDATES

Student Absences

A reminder to the Vale Park Community that if your child is going to be absent from school due to sickness or family reasons can you please ensure you let the Front Office know. This can be done by ringing the school on 8261 3733 at anytime. Please leave a voicemail message if you are unable to speak to any of the Front Office staff.

Additionally, you can send an email to dl.0967.info@schools.sa.edu.au to notify the Front Office staff.

For all absences that are more than three (3) days due to sickness a medical certificate from a doctor will need to be provided. If your child is going to be away for an extended period of five (5) or more days you will need to speak with the Front Office staff about completing an Exemption Form.

Student Arrival Time

The Vale Park Community is reminded that students are not permitted on the Vale Park Primary School grounds until 8:30am; unless enrolled in OSHC. The before school yard duty teacher doesn't commence until 8:30am. If you need to drop your student at Vale Park before 8:30am please contact OSHC. To enrol your student/s please contact OSHC on 0422 274 649.

Vale Park Basketball

Congratulations to our Year 2/3 basketballers after their final last term. Our thanks to Rachael for all her coaching and guidance.

Staff ONLY Entry/Exit points

Please note that the doorway adjacent to Room 1 (Art) is a Staff ONLY Entry and Exit point. Parents, caregivers and volunteers should not use this doorway.

Vale Park Primary School - NEWS

To stay up to date with all things Vale Park, please ensure you visit our website <http://www.valeparkps.sa.edu.au/news.htm>



Woolworths Earn & Learn

This year we will be participating in the Woolworths Earn & Learn program. Through this program we will be able to get new educational resources for our school/early learning centre and all we need you to do is shop for your groceries at Woolworths.

From Wednesday 1st May to Tuesday 25th June, we are collecting Woolworths Earn & Learn Stickers. You will get one Woolworths Earn & Learn Sticker for every \$10 spent (excluding liquor, tobacco and gift cards). Place the Woolworths Earn & Learn Sticker onto a Woolworths Earn & Learn Sticker Sheet and when it's complete, the Sticker Sheet can be dropped into the Collection Box here at the school or at Woolworths Walkerville.

At the end of the promotion, we'll be able to get some great new equipment. The range is extensive and offers lots of items ideal for our students – including resources for Maths, English, Science and some fantastic fun supplies for Arts & Craft, Sport and for our Library. If you'd like to know more visit www.woolworths.com.au/earnandlearn





MOTHER'S DAY STALL

THE FUNDRAISING COMMITTEE IS HOLDING A MOTHER'S DAY STALL FOR THE STUDENTS TO PURCHASE 'SOMETHING SPECIAL' FOR THE SPECIAL WOMEN IN THEIR LIVES.

EACH CLASS WILL BE ALLOCATED A SHOPPING TIME ON

THURSDAY 9TH MAY

OR FRIDAY 10TH MAY

GIFTS AND CARDS ARE AVAILABLE FROM \$1 TO \$8



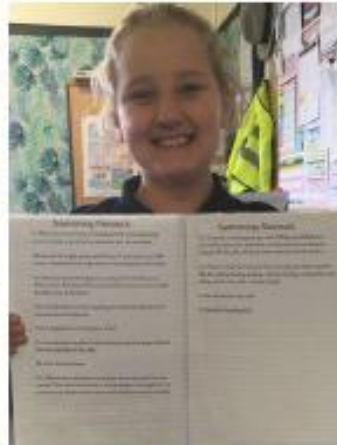
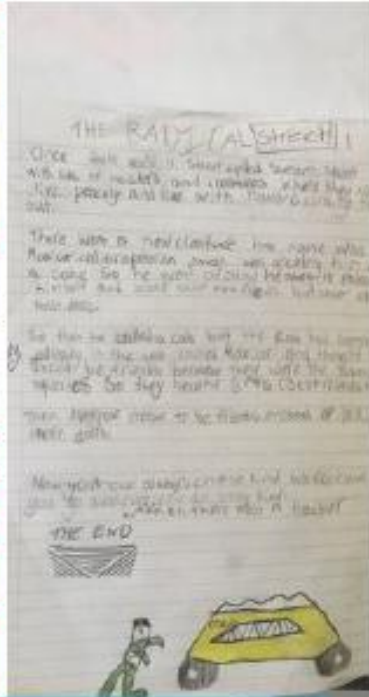
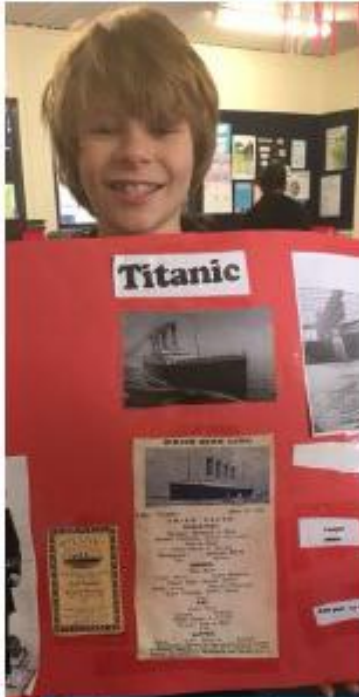
ROOM 11 - YEAR 2 & 3

KITCHEN & GARDEN FUN



We loved spending time in the kitchen and garden in Term 1.

We look forward to continuing these fun filled lessons this Term.

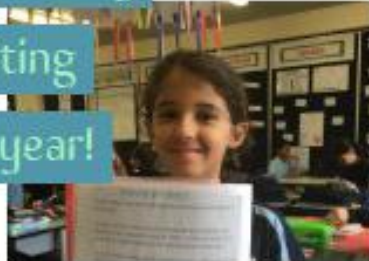


Year 4 - Room 20

Room 20 are extremely

proud of the writing

we've done this year!





ELECTION DAY

**SAUSAGE
SIZZLE**

AND

BAKE STALL



HERE

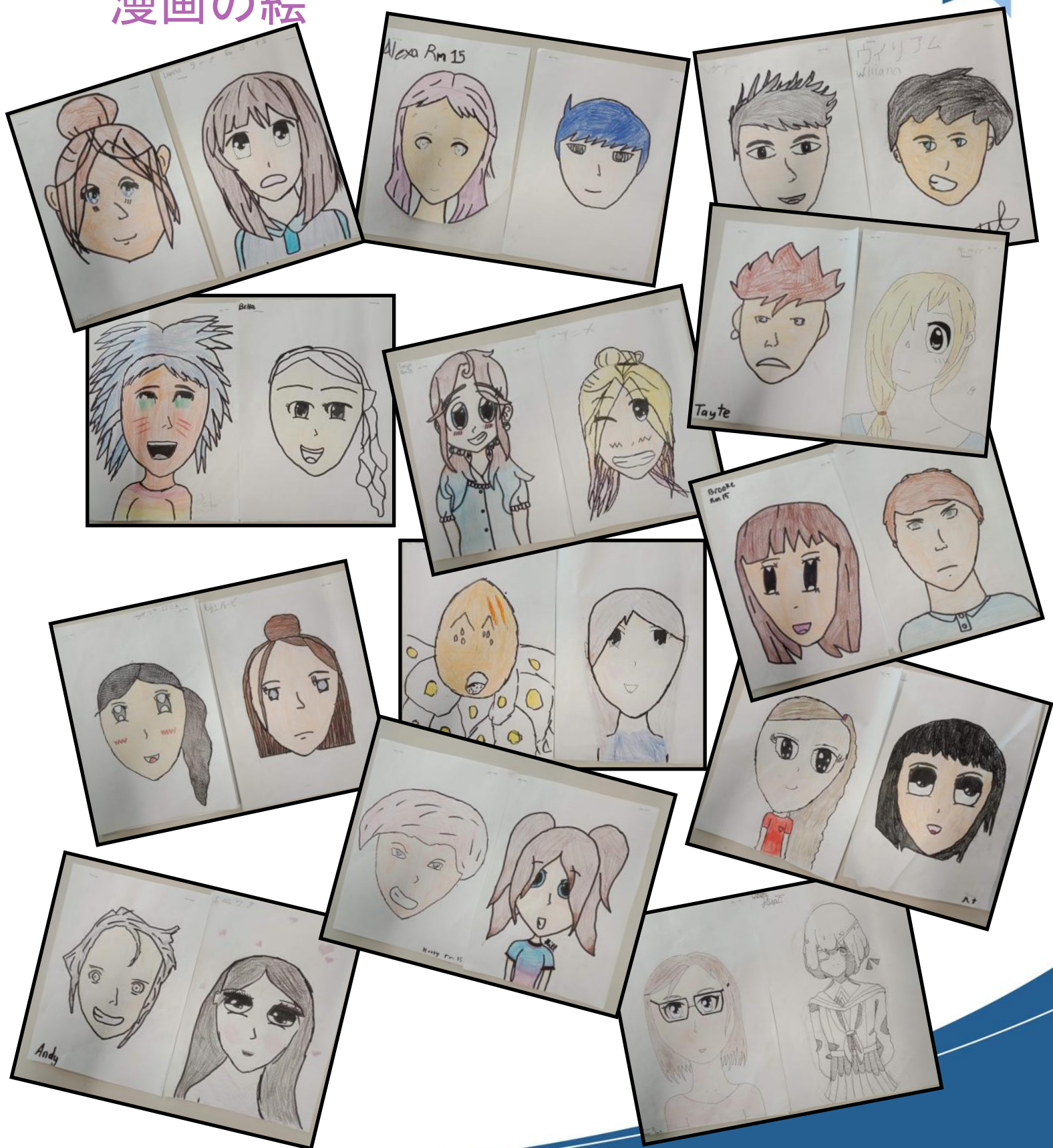
9AM TO 2PM



At the end of last term, the senior school had a try at Japanese style manga drawings. They are hanging up in the Japanese room now if you want a closer look.

日本語

漫画の絵





WHAT'S BEEN

GROWING ON IN THE GARDEN



Room 15 made their own Rain gauges, just need to wait for the rain now.

A big thank you to the Dearinger Family for creating beautiful butterflies for our garden.



Harvest time for apples, watermelon, quince and it has been a great season for eggplants.



New brick edging in Garden One.

Plenty of winter seedlings almost ready to plant in the ground.



Digging through the soil searching for worms.



Planting Sweet Peas in egg cartons.





WE'RE TAKING IT IN OUR STRIDE ON FRIDAY 17 MAY 2019

Well it's that time of year again when our school seriously starts talking about walking!

Walk Safely to School Day asks that we all consider our transport habits and try to incorporate more walking as part of a healthy, active way to get around. And although walking all the way to school isn't realistic for many of us, it's quite easy to figure out how you can build a walk into your family's daily routine.

You can teach your child the healthy habit of walking more by:

- Walking with them the whole way to school
- If they get the bus or train, walk past your usual stop and get on at the next stop
- If you have to drive, park the car a few blocks away from the school and walk the rest of the way.

Regular exercise like walking with your child not only helps them (and you!) beat chronic problems like obesity, heart disease, behavioural and mental health issues and diabetes. It also gives you a great opportunity to teach your child safe ways to behave around roads and traffic.

Remember, Active Kids are Healthy Kids so get planning your own Walk Safely to School Day journey for Friday 17 May 2019!

For more information, visit www.walk.com.au

Mr Goldney and Miss Rivett will be in the yard before school giving out tickets to all students who actively arrive at school for a prize draw!





Marryatville High School Special Interest Music Centre

- Applications are due by **Friday 3 May 2019, 4pm.**
- First round auditions are being held on **Friday 10 May, 2019.**
- Second round auditions are being held on **Thursday 23 & Friday 24 May, 2019.**

For more information about the Special Interest Music Centre please visit www.marryatvillehs.sa.edu.au or call 83048431



pack a
waste-free
lunch

Waste Free Wednesdays

VALE PARK PRIMARY SCHOOL



SCAN QR CODE FOR NUDE FOOD INFO

KESAB - Wipe Out Waste
<http://www.wow.sa.gov.au/nude-food.html>



Disability Policy and Programs
PARENT FORUM

2019 SAVE THE DATE

PLEASE KEEP THESE DATES FREE FOR 2019

Parent Forums

To be held at the co-located site of Fulham Gardens Primary and the Special Education Resource Unit from 9:30am to 2:00pm

Term 1 Friday 22nd March

Term 2 Friday 21st June

Parent Conference

To be held at the Adelaide Hilton

Term 3 Wednesday 25th September

For parents and carers of children and young people with a disability at preschool or school

The Australian Council on Children and the Media (ACCM) presents

Dr Susan Linn: The Hostile takeover of childhood - protecting children from hidden online marketing

A great opportunity for parents and teachers to engage with a leading expert on the commercialisation of childhood

Tuesday 7th May, 2019 7:15pm - 8:45pm

FREE event (but audience must register)

[BOOK HERE](#)



One of the most pervasive and troubling problems associated with children's screen time is that most of the platforms and media aimed at kids incorporate overt and covert advertising. In this seminar, Dr. Susan Linn, founder of the Campaign for Commercial-Free Childhood and author of Consuming Kids will talk about how apps, games and digital devices benefit marketers at the expense of children.

In addition, Susan will discuss:

- the ways in which children are developmentally vulnerable to advertising
- the sophisticated data collection and marketing techniques corporations routinely use to target kids on digital devices
- why children need us to create better policies to protect them from corporate marketing
- practical steps families can take to limit the harmful effects of commercialism on their children

Venue:

Concordia College Chapel
24 Winchester St
Highgate
Adelaide, SA 5083

This event is proudly supported by MGM Wireless and Concordia College



More information: www.childrenandmedia.org.au 8376 2111

Contact Phone Numbers

OSHC: (after 3pm) 8266 0439

Mobile: 0422 274 649

Vale Park Pre School: 8261 0228

Uniform Shop

Open Tuesday Mornings 8.30 - 9.15

Kristina: 0434 354 144

Mon - Fri 8am - 4.30pm